

HIGH PRECISION BASE PLATE-TO-COUCH TOP FIXATION DEVICES

BRIDGE BAR FOR iBEAM® COUCH (MRI COMPATIBLE)

Article No. : **32151**

A. GENERAL PRODUCT INFORMATION

The products referred to in these instructions are devices used to connect High Precision base plates from Orfit Industries to indexed couch tops like the Medical Intelligence iBEAM®, Tomotherapy HiArt®, or Brainlab Novalis®.

B. PRODUCT DESCRIPTION

Bridge Bar with indexing pins for direct use on 30 mm thick base plates. For use with 12 mm base plates, use in combination with adapter plate ref. 35747.

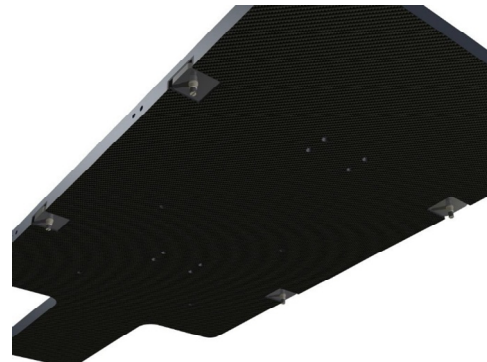
C. PARTS LIST

Art. No.	Description
32151	BRIDGE BAR SET
containing:	
1 x 32151/4/1	Bridge Bar
2 x 32151/4/2	Bridge Bar Pin
4 x 32165/4	Screw countersunk M5 x 12 (for use on CFL base plate 32301 and 32150)
4 x 32041/5	Screw countersunk M5 x 25 (for use on HPL base plate 32204)



D. FIXATION TO BASE PLATES

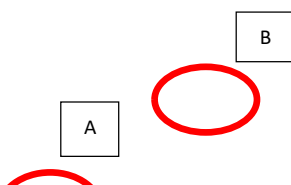
D.1. Fixation to the IMRT base plate



- Remove the indexing pins from the Bridge Bars.
- Slide the two Bridge Bars, without Indexing Pins, into the two tunnels of the base plate until centred. The largest diameter of the pin tread holes must point towards the couch.
- Use the four M5 x 12 countersunk screws to fix both Bridge Bars to the base plate (position A and B).

Remark:

See Paragraph E. on how to mount the Indexing Pins.



D.2. Fixation to AIO SOLUTION base plates

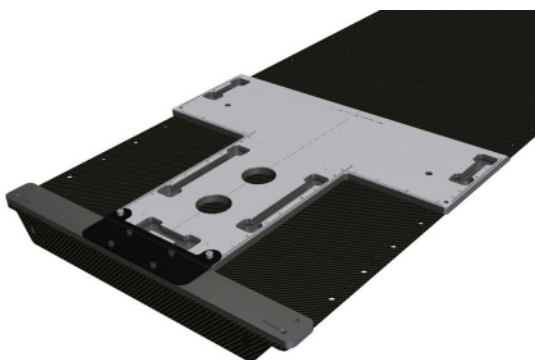


- Remove the indexing pins from the Bridge Bar.
- Slide the Bridge Bar, without Indexing Pins, into the tunnel of the base plate until centred. The largest diameter of the pin tread holes must point towards the couch.
- Use the four M5 x 12 countersunk screws to fix the HP Bridge Bar to the base plate (position A).
- The Bridge Bar must be combined with another fixation device to guarantee stability and prevent breaking of the bridge bar pins. See the fixation device solutions for the AIO base plate on the Orfit website.

Remark:

See Paragraph E. on how to mount the Indexing Pins.

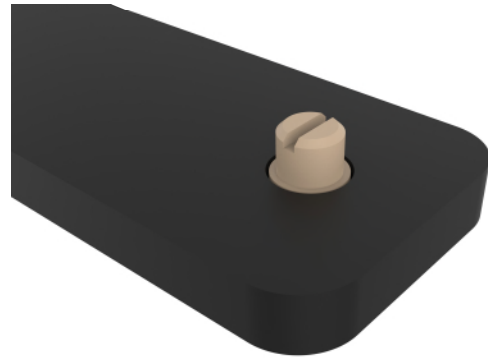
D.3. Fixation to HP base plates



- The above base plates are connected with the Bridge Bar with an Adapter Plate (ref. 35747)
- Attach the Adapter Plate to the Bridge Bar with the four M5 x 10 screws supplied with the adapter plate package. The largest diameter of the pin tread holes of the bridge bar must point towards the couch.
- Attach the base plates to the Adapter Plate with the two M6 x 10 screws supplied in the package of the adapter plate.

E. MOUNTING OF THE INDEXING PINS

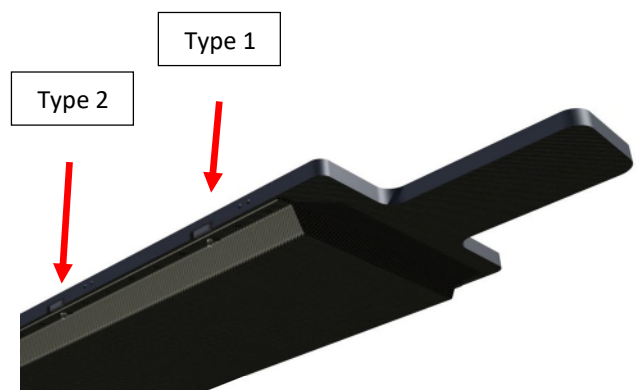
Turn the Indexing Pin with a clockwise motion into the holes situated on the outer ends of the HP Bridge Bar.



Remarks:

- Always use the entire thread length.
- Mount the pins before placing the base plate onto the couch. It cannot be done afterwards.
- Turn manually. Only use power tools if absolutely needed and only rotate counter clockwise.

F. EXAMPLE OVERHANG FIXATION ON iBEAM



ATTENTION !

Always lock the base plate securely to the couch top when in overhang position.

G. PRECAUTIONS FOR USE

- Use the four M5 x 10 countersunk screws to fix the HP Bridge Bar to the base plate (position A).
- Mount the pins manually. Only use power tools when absolutely needed and only rotate counter clockwise.
- Be careful when placing the base plate, with fixation devices mounted, onto the treatment couch.
- Remove the base plate from the treatment couch in a parallel movement in order not to break the pins.

- In case of using on an AIO base plate, always use in combination with another fixation device. See the fixation device solutions for the AIO base plate on the Orfit website.

H. STORAGE

Always store the product in a safe place to prevent it from getting damaged.

Store the product between +10°C (50°F) and 40°C (122°F).

I. MAINTENANCE AND WASTE MANAGEMENT

This product can be cleaned and disinfected by means of soapy water or an isopropanol based disinfectant, applied with a soft cloth. If unsure about the cleaning fluid, do not use. **Never use aerosol sprays, corrosive cleaning agents, solvents or abrasive detergents.**

Periodic checks of the product should be done to insure the parts are not worn and require repair or replacement. **Do not attempt to make repairs yourself.** Contact your distributor if there are any questions or concerns.

The product can be disposed of with household waste.

J. FIXATION DEVICES COMBINATION PACKAGES

This product is part of following fixation devices combination packages:

- 35154
- 32157
- 33139
- 33129

K. ADDITIONAL INFORMATION

For additional information such as distributor contact information, product brochures, Safety Data Sheets and regulatory information, please visit our website www.orfit.com.

Note:

It is prohibited to make alterations to this text without prior approval from Orfit Industries. EXACT™ is a trademark of Varian Medical Systems Inc. iBEAM® is a trademark of Elekta.



ORFIT INDUSTRIES
Vosveld 9A | B-2110 Wijnegem | Belgium
T (+32) (0)3 326 20 26
welcome@orfit.com

www.orfit.com



Ref. No. 31916
VERSION 12
LAST UPDATE: 21/03/2023
REVISION DATE: 21/03/2025