

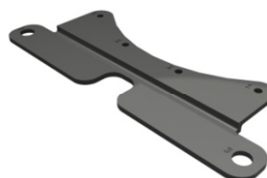
HIGH PRECISION BASE PLATE-TO-COUCH TOP FIXATION DEVICES: ADAPTER PLATES



Article No. : **35747**



Article No. : **35747/8**



Article No. : **32063**



Article No. : **38228**



Article No. : **32077**

A. GENERAL PRODUCT INFORMATION

The products referred to in this document are devices that connect Orfit radiation therapy base plates to couch top fixation devices like the table fix and two or three-pin indexing bars.

These products may only be used in combination with immobilization devices produced by Orfit. Orfit prohibits the use of unauthorized third-party products in conjunction with its own products.

B. PRODUCT RANGE

Art. No.	Description
35747	Adapter plate for Table Fix 12mm Base Plate (with screws) <i>Except 32113 & 32117 Cyberknife base plates</i>
35747/8	Caudal adapter plate for 2-pin Indexing Bar 30mm Base Plate (MRI safe) <i>For use with two-pin and three-pin indexing bars.</i>
32063	Adapter plate for 2-pin Indexing Bar

	12mm Base Plate (MRI safe) <i>For use with two-pin and three-pin indexing bars.</i>
32077	Adapter plate for 2-pin indexing Bar 12mm Base plate (Same 2-pin bar position as 32110/MR) (MRI safe) <i>For use with two-pin and three-pin indexing bars.</i>
38228	AIO 3.0 cranial adapter plate for 2-pin Indexing bar (MRI safe) <i>For use with two-pin and three-pin indexing bars.</i>

C. ASSEMBLY

Art. No. 35747

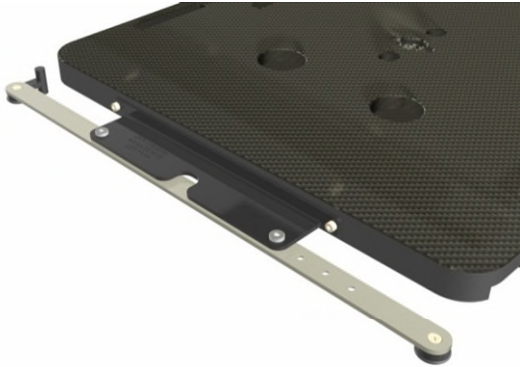
Place the Table Fix onto the treatment couch and then place the base plate – adapter plate assembly on top. Use the four M5 x 10 bolts and Allen wrench to fix the adapter plate to the Table Fix.

Parts list:

- 35747 – Adapter plate (Aluminium)
- 35744/7 – M5 x 10 bolt (4x)

- 35744/3 – Allen wrench 4 mm (1x)
- 35744/4 – M6 x 10 bolt (2x)
- 35744/5 – Allen wrench 5 mm (1x)

Art. No. 35747/8



Parts list:

- 35747/8 – Adapter Plate (POM)
- 32066/2 – M5 x 20 Screw (2x)
- 35744/3 – Allen Wrench 4 mm

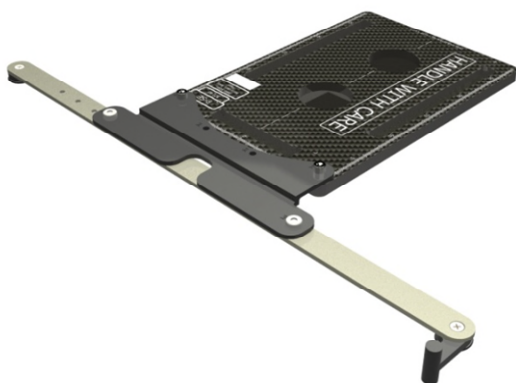
Attach the adapter plate to the caudal end of the large base plates (AIO and IMRT long board) by means of the two M5 screws. This assembly can then be put over the pins of a two or three-pin lock bar.

Use together with other fixation devices like the AIO Loxon or the AIO fix as lateral fixators on the large base plates.

Remark:

Do not use this solution when the base plate is overhanging the couch top. It is recommended to use a table fix solution with L-shaped blocks to prevent tilting.

Art. No. 32063



Parts list:

- 32077 – Adapter Plate (Acetal)
- 32063/1 – M6 x 12 Screw (2x)
- 35744/5 – Allen Wrench 5 mm

Attach the adapter plate to the superior end of the base plate by means of the two M6 screws. This assembly can then be put over the pins of a two or three-pin lock bar.

Verify that the adapter plate is attached in the correct manner. The shape of the adapter plate should follow the shape of the base plate, where the adapter plate is bent.

Art. No. 32077



Parts list:

- 32077 – Adapter Plate (POM)
- 32063/1 – M6 x 12 Screw (2x)
- 35744/5 – Allen Wrench 5 mm

Attach the adapter plate to the superior end of base plate 32110 or 35751N by means of the two M6 screws. This assembly can then be put over the pins of a two or three-pin lock bar.

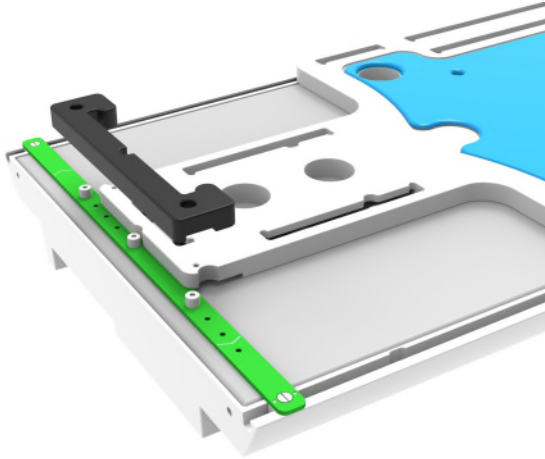
Verify that the adapter plate is attached in the correct way. The shape of the adapter plate should follow the shape of the base plate, where the adapter plate is bent.

This adapter plate allows to position base plates 32110 and 35751N in exactly the same position as base plate 32110/MR. The position of the built-in adapter plate of base plate 32100/MR corresponds to the position of the adapter plate 32077 on base plates 32110 and 35751N.



Adapter plate 32077 is made of a high density material and is not intended to treat through. The product is not located in the treatment area.

Art. No. 38228



The adapter is positioned over the pins of a 2-pin or 3-pin indexing bar and fits in the circular cut-outs on the cranial end of the AIO 3.0 base plates. No further fixation of the adapter to the AIO 3.0 base plate is required.

Verify that the adapter plate is attached in the correct way and make sure the AIO 3.0 base plate cannot move.

D. STORAGE

The base plate can be stored with adapter plate attached, except for adapter 38228. If so, be careful during handling as the device is an extension to the base plate and may injure persons.

Always store the item in such a way that the adapter plate does not take any weight of the base plate. Do not store anything on top of the adapter plate. A damaged adapter plate must be repaired or replaced!

Always store the product in a safe place to prevent it from getting damaged.

Handle with care.

Store the products between +10°C (50°F) and 40°C (104°F).

E. MAINTENANCE AND WASTE MANAGEMENT

This product can be cleaned and disinfected by means of an isopropanol based disinfectant, applied with a soft cloth. If unsure about the cleaning fluid, do not use. **Never use aerosol sprays, corrosive cleaning agents, solvents or abrasive detergents.**

Periodic checks of the product should be done to insure the parts are not worn and require repair or replacement. **Do not attempt to make repairs yourself.** Contact your distributor if there are any questions or concerns.

The product can be disposed of with household waste

F. FIXATION DEVICES COMBINATION PACKAGES

These products are part of one or more of following fixation devices combination packages:

- 32171
- 32172
- 33134
- 35154
- 33158
- 33165
- 32182
- 32185
- 33164
- 33162
- 33123
- 33122
- 33143
- 32183
- 32184
- 33159
- 33133
- 33141
- 32169
- 32174
- 33140
- 33138
- 33121
- 33120
- 35745
- 33142

G. ADDITIONAL INFORMATION

For additional information such as distributor contact information, product brochures, Safety Data Sheets and regulatory information, please visit our website www.orfit.com.

Note:

It is prohibited to make alterations to this text without prior approval from Orfit Industries.



ORFIT INDUSTRIES
Vosveld 9A | B-2110 Wijnegem | Belgium
T (+32) (0)3 326 20 26
welcome@orfit.com

www.orfit.com



Ref. No. 31937
VERSION 14
LAST UPDATE: 21/03/2023
REVISION DATE: 21/03/2025