

# HIGH PRECISION BASE PLATE-TO-COUCH TOP FIXATION DEVICES HIGH PRECISION INDEXING SYSTEM FOR iBEAM®-TYPE COUCH TOPS (MRI COMPATIBLE)



Article No. : **32126**

## A. GENERAL PRODUCT INFORMATION

The product referred to in this instructions is a fixation device to attach High Precision base plates to iBEAM® couch tops.

## B. PRODUCT DESCRIPTION

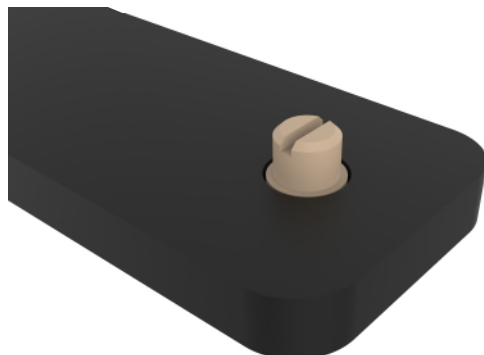
The indexing pins described in these instructions are fixation devices to position a 32124 Pelvicast™ base plate and an HP PRO base plate on a couch with holes in its surface as indexing points (indexed couch tops like the Medical Intelligence iBEAM®, Tomotherapy HiArt®, or Brainlab Novalis®).

## C. USAGE

The 32124 Pelvicast™ base plate has 4 holes into which the indexing pins can be screwed. The HP PRO base plate has 4 holes on the underside of the board on the reinforced sections. The 32126 set contains four of the described Indexing Pins that are screwed into these holes. The holes are positioned in such a way that the pins will index to the holes on the side of the couch top.



Turn the Indexing Pin with a clockwise motion into the holes situated on the bottom of the base plate.



Remarks:

- Always use the entire thread length.
- Mount the pins before placing the base plate onto the couch. It cannot be done afterwards.
- Turn manually. Only use power tools if absolutely needed and only rotate counter clockwise.

## D. STORAGE

Always store the product in a safe place to prevent it from getting damaged or getting lost. Prevent hard objects from falling into the devices.

Store the pins between +10°C (50°F) and 40°C (122°F).

## E. PROPERTIES

### Physical Properties

The following physical properties apply to these units:

Dimensions: L 26 mm x D 12 mm  
Weight: 0,01 kg

These Indexing Pins are made of PEEK.

This product is made entirely of electrically non-conductive, non-metallic and non-magnetic materials and is MRI safe.



## F. MAINTENANCE AND WASTE MANAGEMENT

This product can be cleaned and disinfected by means of soapy water or an isopropanol based disinfectant, applied with a soft cloth. If unsure about the cleaning fluid, do not use. **Never use aerosol sprays, corrosive cleaning agents, solvents or abrasive detergents.**

Periodic checks of the product should be done to insure the parts are not worn and require repair or replacement. **Do not attempt to make repairs yourself.** Contact your distributor if there are any questions or concerns.

The product can be disposed of with household waste.

## G. FIXATION DEVICES COMBINATION PACKAGES

This product is part of following fixation devices combination packages:

- 33131
- 32127

**H. ADDITIONAL INFORMATION**

For additional information such as distributor contact information, product brochures, Safety Data Sheets and regulatory information, please visit our website [www.orfit.com](http://www.orfit.com).

**Note:**

It is prohibited to make alterations to this text without prior approval from Orfit Industries.  
iBEAM® is a registered trademark of Medical Intelligence.



**ORFIT INDUSTRIES**  
Vosveld 9A | B-2110 Wijnegem | Belgium  
T (+32) (0)3 326 20 26  
[welcome@orfit.com](mailto:welcome@orfit.com)

[www.orfit.com](http://www.orfit.com)



Ref. No. 31973  
VERSION 8  
LAST UPDATE: 21/03/2023  
REVISION DATE: 21/03/2025