

RAYCAST® HIGH PRECISION BASE PLATE-TO-COUCH TOP FIXATION DEVICES

HIGH PRECISION BASE PLATE-TO-COUCH TOP FIXATION DEVICES 2-PIN BAR FOR EXACT™ COUCH (MRI COMPATIBLE)



Article No. : 32166

A. GENERAL PRODUCT INFORMATION

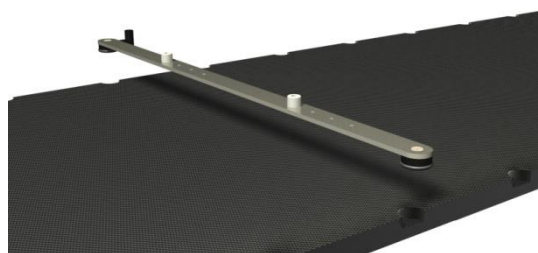
This product is a fixation device to attach Raycast High Precision base plates to couch tops with the Exact™ type indexing.

B. PRODUCT DESCRIPTION

This fixation device features two positioning elements that can be inserted in the half-moon cut-outs on both sides of an Exact™ style couch. It also features two pins on top that can be used to index hardware (base plates, shoulder positioning device, leg indexing system, etc.) directly or via an adapter plate to the couch. Information on these other parts, such as the base plates, can be found in the respective 'instructions for use'.

C. POSITIONING ON A COUCH

The two round positioning elements of this fixation device fit directly in the cut-outs of an Exact-like couch. On one side of the bar you will find a static round element and on the other side a moving, eccentrically placed element that can be used to lock the bar into a set of couch cut-outs.



To position this 2-pin bar on such a couch, gently push the bar with its two indexing elements into a set of couch cut-outs and rotate the lever of the moving element into the 'locked' state. The bar itself should now be flat on the surface of the couch. Always make sure that the bar is well positioned on the couch before indexing the other hardware to the 2-pin bar.

D. STORAGE

Always store the product in a safe place to prevent it from getting damaged.
Store the product between +10°C (50°F) and 40°C (122°F).

E. PROPERTIES

E.1 Physical Properties

Dimensions : L 550 mm x W 25 mm x H 25 mm
Weight: 0.1 kg

E.2 Material Properties

Material POM (pins/blocks): 1,4 gr/cm³
Material PC (screws): 1,2 gr/cm³
Material Glass Fibre (bar): 1,8 gr/cm³

This product is made entirely of durable plastics and is MR-safe.



Warning: keep metal wrenches which might be supplied in the package out of the MRI room.

E.3 Dosimetric Properties

Attenuation factor (± 0.15 %)	
6 MV	2.67 %
15 MV	2.00 %
H ₂ O equivalence	7.72 mm

Note: Use these numbers as a guidance only. Perform the measurements again in your department to verify these results.

F. MAINTENANCE AND WASTE MANAGEMENT

This product can be cleaned and disinfected by means of an isopropanol based disinfectant, applied with a soft cloth. If unsure about the cleaning fluid, do not use. **Never use aerosol sprays, corrosive cleaning agents, solvents or abrasive detergents.** Further cleaning instructions can be found in the [Orfit Cleaning Guidelines](#).

Periodic checks of the product should be done to insure the parts are not worn and require repair or replacement. **Do not attempt to make repairs yourself.** Contact your distributor if there are any questions or concerns.

The product can be disposed of with household waste.

G. FIXATION DEVICES COMBINATION PACKAGES

This product is part of following fixation devices combination packages:

- 32171
- 32172
- 32178
- 32183
- 32184

H. ADDITIONAL INFORMATION

For additional information such as distributor contact information, product brochures, Safety Data Sheets and regulatory information, please visit our website www.orfit.com.

Note:

It is prohibited to make alterations to this text without prior approval from Orfit Industries.
RAYCAST® is a registered trademark of ORFIT INDUSTRIES N.V. EXACT™ is a trademark of Varian Medical Systems Inc.



ORFIT INDUSTRIES
Vosveld 9A | B-2110 Wijnegem | Belgium
T (+32) (0)3 326 20 26
welcome@orfit.com

www.orfit.com



Ref. No. 31990
VERSION 7
LAST UPDATE: 01/04/2021
REVISION DATE: 01/04/2023