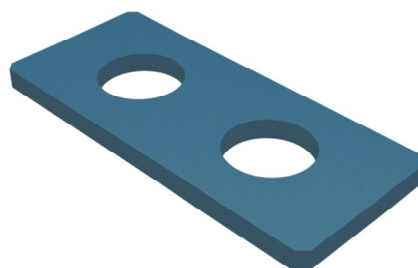


HIGH PRECISION INTERFACES & ADAPTERS

HIGH PRECISION HEAD SUPPORT INTERFACE FOR BASE PLATES WITH PUSH-PINS



Article No. : **32048**

A. GENERAL PRODUCT INFORMATION

The product referred to in this document is a medical device, used for patient positioning and immobilisation in radiation therapy. This product may only be used in combination with Orfit immobilisation products. Orfit prohibits the use of unauthorised third-party products in conjunction with its own products.

B. PRODUCT DESCRIPTION

This interface converts a base plate for thermoplastic head and neck masks with push pins into a base plate that will accept the Orfit High Precision head supports with cranial stop in order to increase the reproducibility of the position of the patient's head. Information on these other parts (and instructions on how to make the masks) can be found in the respective 'instructions for use' and on www.orfit.com.

C. USAGE

This interface fits precisely in the rectangular recess of the base plate where the head supports are normally placed. In this way the Push Pin base plate can be converted into a base plate that will accept the Orfit High Precision Head Supports. These head supports have two knobs on the bottom that will fit perfectly in the two receptacle holes of the interface.

D. STORAGE

Always store the product in a safe place to prevent it from getting damaged. Take care not to damage the edges of the plate when storing it in an upright position. Prevent hard objects from falling onto the plate.

Store the base plate between +10°C (50°F) and 40°C (122°F).

E. PROPERTIES

This interface is made of EVA foam.

E.1 Physical Properties

The following physical properties apply to this product:

Dimensions: L 230 mm x W 100 mm x H 13 mm
Weight: 0,03 kg

E.2 Dosimetric Properties

Attenuation factor ($\pm 0.15\%$)
6 MV 0.5%
10 MV 0.4%
H₂O equivalence 1.8 mm

Note: Use these numbers as a guidance only. Perform the measurements again in your department to verify these results.

F. MAINTENANCE AND WASTE MANAGEMENT

This product can be cleaned and disinfected by means of soapy water or an isopropanol based disinfectant, applied with a soft cloth. If unsure about the cleaning fluid, do not use. **Never use aerosol sprays, corrosive cleaning agents, solvents or abrasive detergents.**

Periodic checks of the product should be done to insure the parts are not worn and require repair or replacement. **Do not attempt to make repairs yourself.** Contact your distributor if there are any questions or concerns.

The product can be disposed of with household waste.

G. ADDITIONAL INFORMATION

For additional information such as distributor contact information, product brochures, Safety Data Sheets and regulatory information, please visit our website www.orfit.com.

Note:

It is prohibited to make alterations to this text without prior approval from Orfit Industries.

