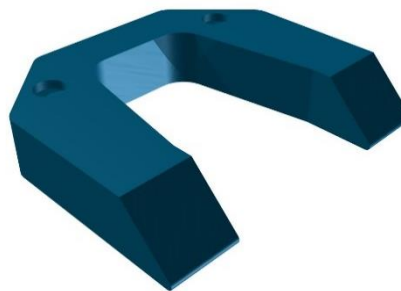


SBRT SOLUTION ARM REST ELEVATION CUSHION



Article No. : **32317/11**

A. GENERAL PRODUCT INFORMATION

The products referred to in these instructions are medical devices, used for patient positioning and immobilization in radiation therapy.

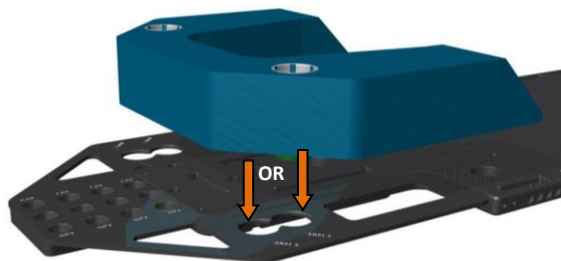
To attain an optimal result, it is recommended to use this product in combination with Orfit immobilisation products.

B. PRODUCT DESCRIPTION

This arm rest elevation cushion is positioned on top of the ARM REST SUPPORT PLATE, that is attached to the SBRT BASE PLATE, and underneath the ARM REST CUSHION. Information on these other parts can be found in the respective 'instructions for use' and on www.orfit.com.

C. PRECAUTIONS FOR USE

The cushion has indexing knobs at the bottom that fit into the two positions provided in the arm rest plate. One cranial position and one caudal position. Always verify that the cushion is positioned correctly. Combine the elevation cushion with the arm rest support and with one or two grip poles and place the arms of your patient in the most comfortable and reproducible position. The knobs at the bottom of the arm rest cushion fit in the holes of the arm rest elevation cushion.



D. STORAGE

Always store the product in a safe place to prevent it from getting damaged. Do not put heavy objects on the cushion and prevent hard objects from falling onto it, because these will cause permanent deformations. Do not expose this cushion to a hot air blower and make sure that no sharp objects can come into contact with the cushion. Store the frame between +10°C (50°F) and 40°C (122°F).

E. PROPERTIES

E.1. Physical Properties

Density: Polyether Foam: 50 kg/m³

Note:

It is prohibited to make alterations to this text without prior approval from Orfit Industries.



ORFIT INDUSTRIES
Vosveld 9A | B-2110 Wijnegem | Belgium
T (+32) (0)3 326 20 26
welcome@orfit.com

www.orfit.com



2K PU Coating: > 1 g/cm³
Dimensions: 540 width x 470 length x 110 mm height:
Weight : 1,15 kg

This product is made entirely of electrically non-conductive, non-metallic and non-magnetic materials and is MRI safe.



E.2. Mechanical Properties

This cushion is made of foam that is covered with a PU coating. This combination results in a stable cushion that keeps its dimensions overtime and under conditions of frequent use. The cushions used on the treatment machines are often used more frequently than those on the simulators and during the imaging stages. We therefore recommend rotating the sets between the different machines on a regular base to avoid differences in wear and tear of the cushions.

E.3. Dosimetric Properties

Attenuation (at 6 and 15 MV) and skin build-up (SBU) values:

Attenuation (± 0.15 %)		SBU (± 0.1 mm)
6 MV	15 MV	mm H ₂ O equiv.
0.141 %	0.113 %	0.35

These values are all per cm of foam.

Note: Use these numbers as a guidance only. Perform the measurements again in your department to verify these results.

F. MAINTENANCE AND WASTE MANAGEMENT

This product can be cleaned and disinfected by means of an isopropanol based disinfectant, applied with a soft cloth. If unsure about the cleaning fluid, do not use. **Never use aerosol sprays, corrosive cleaning agents, solvents or abrasive detergents. Do not soak the cushion.** Further cleaning instructions can be found in the [Orfit Cleaning Guidelines](#). Periodic checks of the product should be done to insure the parts are not worn and require repair or replacement. **Do not attempt to make repairs yourself.** Contact your distributor if there are any questions or concerns. The product can be disposed of with household waste.

G. ADDITIONAL INFORMATION

For additional information such as distributor contact information, product brochures, Safety Data Sheets and regulatory information, please visit our website www.orfit.com.

Ref. No. 50046
VERSION 5
LAST UPDATE: 02/04/2021
REVISION DATE: 02/04/2023