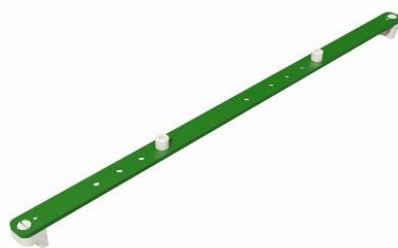


RAYCAST® HIGH PRECISION BASE PLATE-TO-COUCH TOP FIXATION DEVICES 2-PIN BAR FOR PRODIGY™ COUCH – 50CM (MRI COMPATIBLE)



Article No. : 32197

A. GENERAL PRODUCT INFORMATION

This product is a fixation device to attach Raycast® High Precision base plates to 500 mm wide couch tops with the Prodigy™ type indexing.
This product may only be used in combination with Orfit immobilisation products. Orfit prohibits the use of unauthorised third-party products in conjunction with its own products.

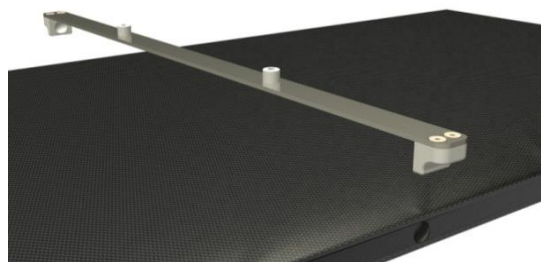
This low density plate can be used during both the simulation and the treatment stage, including MRI simulation.

B. PRODUCT DESCRIPTION

This 2-pin bar has two positioning blocks that fit over the bulbs on the sides of Prodigy™ style couches. It can be used to index hardware (base plates, shoulder positioning device, leg indexing system, etc.) directly or via an adapter plate to the couch. For information on the compatible products, please refer to the respective 'instructions for use' and on www.orfit.com.

C. POSITIONING ON A COUCH

The two blocks of this fixation device have a circular recess on the inside and fit perfectly over the bulbs of the Prodigy™ style indexing system.



Push the bar over a set of bulbs until it clicks in place. The bar itself should now be flat on the surface of the couch. Always make sure that the bar is well positioned on the couch before indexing the other hardware.

To remove the bar, hold the two ends of the bar and pull until the bar snaps off the couch. Never pull in the middle of the bar as this will push the positioning blocks even harder onto the bulbs of the couch.

D. STORAGE

Always store the product in a safe place to prevent it from getting damaged.

Store the product between +10°C (50°F) and 40°C (122°F).

E. PROPERTIES

Physical Properties

Dimensions: L 545 mm x W 25 mm x H 40 mm
Weight: 0.1 kg

This product is made entirely of electrically non-conductive, non-metallic and non-magnetic materials and is MRI safe.



Keep metal wrenches which might be supplied in the package out of the MRI room.

Material Properties

Material POM (pins): 1,4 gr/cm³
Material PA (blocks): 1,15 gr/cm³
Material PVDF (screws): 1,78 gr/cm³
Material Fiberglass (bar): 1,8 gr/cm³

F. MAINTENANCE AND WASTE MANAGEMENT

This product can be cleaned and disinfected by means of soapy water or an isopropanol based disinfectant, applied with a soft cloth. If unsure about the cleaning fluid, do not use. **Never use aerosol sprays, corrosive cleaning agents, solvents or abrasive detergents.**

Periodic checks of the product should be done to insure the parts are not worn and require repair or replacement. **Do not attempt to make repairs yourself.** Contact your distributor if there are any questions or concerns.

The product can be disposed of with household waste.

G. ADDITIONAL INFORMATION

For additional information such as distributor contact information, product brochures, Safety Data Sheets and regulatory information, please visit our website www.orfit.com.

Note:

It is prohibited to make alterations to this text without prior approval from Orfit Industries.
RAYCAST® is a registered trademark of ORFIT Industries.



ORFIT INDUSTRIES
Vosveld 9A | B-2110 Wijnegem | Belgium
T (+32) (0)3 326 20 26
welcome@orfit.com

www.orfit.com



Ref. No. 50138
VERSION 2
LAST UPDATE: 02/04/2021
REVISION DATE: 02/04/2023