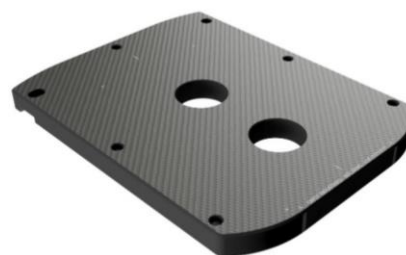


RAYCAST® DUON® HEAD BASE PLATE



Article No. : 32095

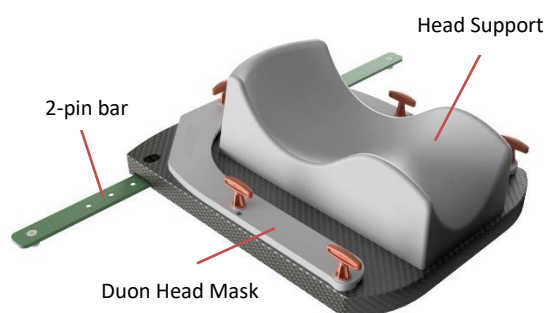
A. GENERAL PRODUCT INFORMATION

The products referred to in these instructions are medical devices, used for patient positioning and immobilisation (head) in radiation therapy. This low density plate can be used during both the simulation and the treatment stage.

This product may only be used in combination with immobilisation masks produced by Orfit. Orfit prohibits the use of unauthorized third-party products in conjunction with its own products.

B. PRODUCT DESCRIPTION

The DUON HEAD BASE PLATE is used in combination with the Orfit DUON HEAD MASKS, RAYCAST HIGH PRECISION HEAD SUPPORTS and COUCH INDEXING DEVICES to form a reproducible patient positioning and immobilisation device in the field of radiotherapy. Information on these other parts can be found in the respective 'instructions for use' and on www.orfit.com.



C. PRECAUTIONS FOR USE

This is a fragile product, please handle with care. Always place the base plate on a flat surface. Clear the treatment table of any debris before positioning the base plate. Always fix the base plate securely to the treatment couch before positioning a patient.

This carbon fibre base plate is constructed to be lightweight and to give good attenuation values for radiotherapy treatment. When handled roughly, it may get damaged and fibres may come off. When this happens, stop using the base plate to prevent fibres from getting in contact with the patient's or user's skin. Contact your distributor.

D. STORAGE

Always store the product in a safe place to prevent it from getting damaged. Take care not to damage the edges of the plate when storing it in an upright position.

Note:

It is prohibited to make alterations to this text without prior approval from Orfit Industries. RAYCAST® and DUON® are registered trademarks of ORFIT Industries.

Prevent hard objects from falling onto the plate. Prevent sharp or pointy objects to come into contact with the carbon fibre surface.

Store the base plate between +10°C (50°F) and 40°C (122°F).

E. PROPERTIES

E.1. Physical Properties

Dimensions : L 337 mm x W 257 mm x H 22 mm
Weight : 0,514 kg

Made from a foam core with carbon fibre top and bottom surfaces. Edges are epoxy resin. Other inserts made from hardwood/epoxy. No metals

E.2. Mechanical Properties

This base plate is not used in overhang and must always be fully supported. It is made to support the weight of a patients head and shoulders and to allow the fixation forces exerted by a radiotherapy mask.

E.3. Dosimetric Properties

The general attenuation factor ($\pm 0,15\%$) is specified in below table:

6 MV	1,4%
15 MV	1,2%
Skin build-up	4 mm H ₂ O equiv.

The Base Plate has areas where higher density ($\pm 1.4 \text{ g/mm}^3$) materials have been used. For example the mask fixation holes, couch indexing features, base plate edge etc. Attenuation factors at 6MV of these insert is 8 to 10 %.

Note: Use these numbers as a guidance only. Perform the measurements again in your department to verify these results.

F. MAINTENANCE AND WASTE MANAGEMENT

This product can be cleaned and disinfected by means of soapy water or an isopropanol based disinfectant, applied with a soft cloth. If unsure about the cleaning fluid, do not use. **Never use aerosol sprays, corrosive cleaning agents, solvents or abrasive detergents.**

Periodic checks of the product should be done to insure the parts are not worn and require repair or replacement. **Do not attempt to make repairs yourself.** Contact your distributor if there are any questions or concerns.

The product can be disposed of with household waste.

G. ADDITIONAL INFORMATION

For additional information such as distributor contact information, product brochures, Safety Data Sheets and regulatory information, please visit our website www.orfit.com



ORFIT INDUSTRIES
Vosveld 9A | B-2110 Wijnegem | Belgium
T (+32) (0)3 326 20 26
welcome@orfit.com

www.orfit.com



Ref. No. 50145
VERSION 2
LAST UPDATE: 07/04/2021
REVISION DATE: 07/04/2023