

# RAYCAST® HIGH PRECISION BASE PLATE-TO-COUCH TOP FIXATION DEVICES LOXON™ IN PLASTIC FOR AIO AND IMRT LONG BASE PLATES ON QFIX® QUANTUM™ COUCH TOPS



Article No. : 33173

## A. GENERAL PRODUCT INFORMATION

The products referred to in these instructions are medical devices, used to connect radiation therapy base plates from Orfit Industries to Qfix® Quantum™ couches.

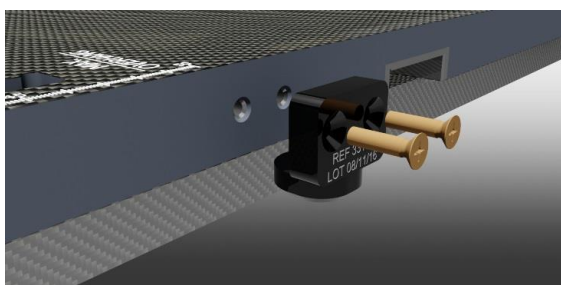
This product may only be used in combination with Orfit immobilisation products. Orfit prohibits the use of unauthorised third-party products in conjunction with its own products.

## B. PRODUCT RANGE

This product can be used to attach the AIO Solution base plates and the long IMRT base plate to the treatment couch. The device is entirely in plastic and MRI compatible.

Information on these other parts can be found in the respective 'instructions for use' and on [www.orfit.com](http://www.orfit.com).

## C. FIXATION ON THE BASE PLATE

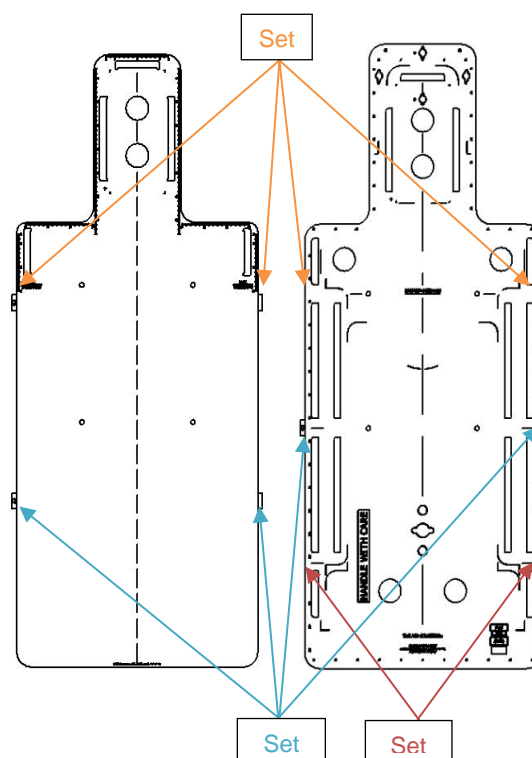


Mount the Loxon blocks to the side of the base plate using the plastic countersunk M5 x 20 screws and a screwdriver.

The IMRT base plate has 2 locations to mount a set of Loxons. The AIO base plate has 3 locations to attach a set of Loxons.

## IMRT Base Plate

## AIO Base Plate



When only one set of Loxons is used, combine it with a Table Fix or a 2-pin indexing bar and an adapter plate. Information on these other parts can be found in the respective 'instructions for use' and the Orfit website: <http://www.orfit.com/en/fixation-devices/>.

The combination of the Loxons with these other items might not allow use in an MRI machine.

## D. INDEXING AND REMOVING

Simply position the base plate with the Loxon over the half-moon opening in the couch top and push down until the base plate is lying flush on the couch top.

Lift the base plate in order to remove it of the couch top

#### E. PRECAUTIONS FOR USE

DO NOT USE LOXON ON ITS OWN WHEN THE BASE PLATE IS IN OVERHANG OFF THE COUCH TOP!

The Loxon indexing does not provide a safe fixation for base plate overhang situations. See the Orfit website for a fixation solution to safely use a base plate in overhang:  
<http://www.orfit.com/en/fixation-devices/>.

Make sure the screws are tightened so there is no play of the base plate during setup and treatment.

Do not mount the Loxon when positioned in the cut-outs of the Qfix® Quantum™ couch top.

The plastic screws can be damaged if excessive force is used during assembly with a screwdriver.

#### F. PROPERTIES

##### F.1 Physical Properties

Dimensions: L 27mm x W 35 mm x H 33 mm  
Weight: <0.1 kg

This product is made entirely of electrically non-conductive, non-metallic and non-magnetic materials and is MRI safe.



##### F.2 Mechanical Properties

The Loxon is made of POM. This provides the necessary stability to get accurate patient positioning even under frequent use.

##### F.3 Dosimetric Properties

Because of the high density of the POM, do not use in the path of the beam.

#### G. STORAGE

Always store the product in a safe place to prevent it from getting damaged.

#### H. MAINTENANCE AND WASTE MANAGEMENT

This product can be cleaned and disinfected by means of soapy water or an isopropanol based disinfectant, applied with a soft cloth. If unsure about the cleaning fluid, do not use. **Never use aerosol sprays, corrosive cleaning agents, solvents or abrasive detergents.**

Periodic checks of the product should be done to insure the parts are not worn and require repair or replacement. **Do not attempt to make repairs yourself.** Contact your distributor if there are any questions or concerns.

The product can be disposed of with household waste.

#### I. ADDITIONAL INFORMATION

For additional information such as distributor contact information, product brochures, Safety Data Sheets and regulatory information, please visit our website [www.orfit.com](http://www.orfit.com).

#### Note:

The instructions were written in accordance with the European Directive 93/42/EEC for Medical Devices. It is prohibited to make alterations to this text without prior approval from Orfit Industries. RAYCAST® is a registered trademarks of ORFIT Industries. LOXON™ is a trademark of Orfit Industries



ORFIT INDUSTRIES  
Vosveld 9A | B-2110 Wijnegem | Belgium  
T (+32) (0)3 326 20 26  
welcome@orfit.com

[www.orfit.com](http://www.orfit.com)



Ref. No. 50146  
VERSION 2  
LAST UPDATE: 01/03/2019  
REVISION DATE: 01/03/2021